

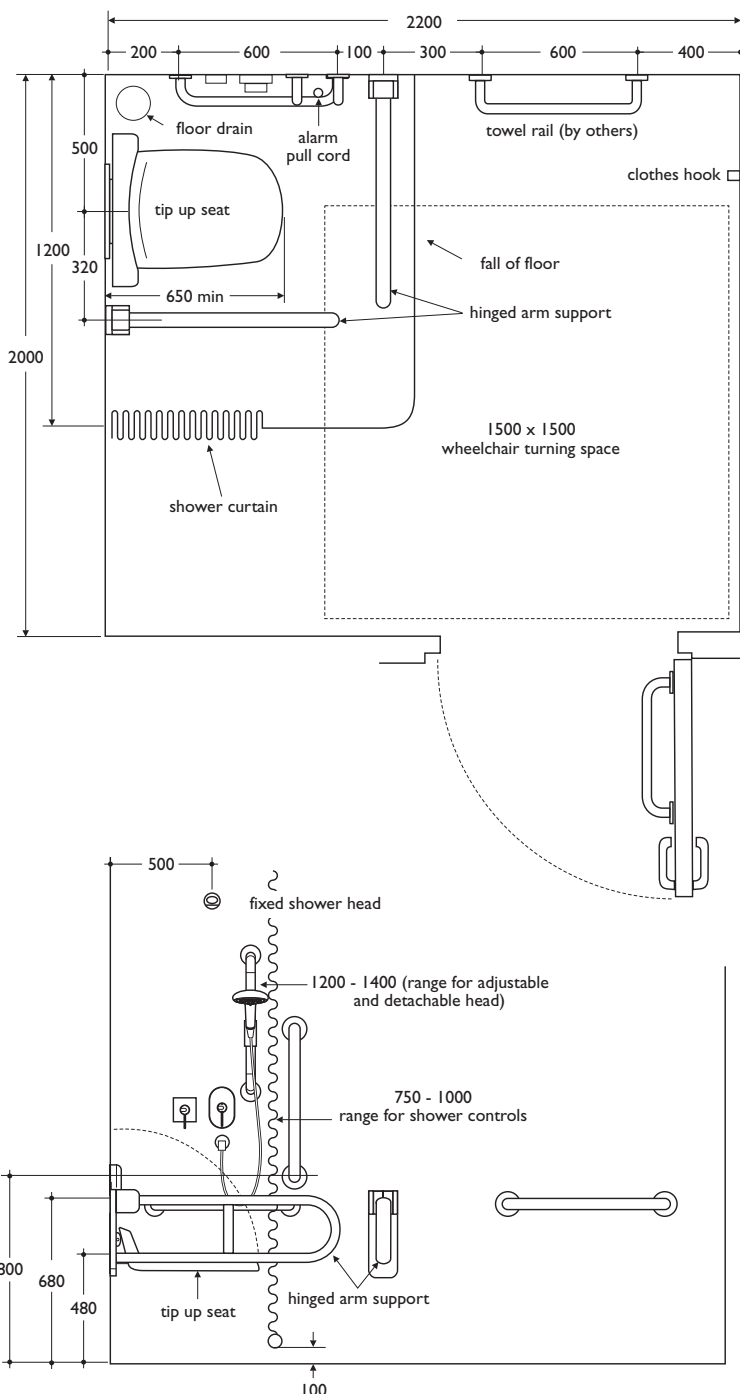
special care

# doc m shower room pack

An installation for use by ambulant disabled, walking impaired and infirm people, providing shower area with slip resistant floor, hinged seat, lever operated mixer, adjustable shower head shower curtain and grab rails.

This installation conforms to Document M of the Building Regulations.

- For complete pack use pack code on previous page
- For individual items use codes below



**Individual item codes**

- S6632XK Multi System folding shower seat in Grey
- S6635XK Multi System back support in Grey
- S6454 60cm grab rails in White (x 3)
- S6467 hinged support rail (x 2)
- S6452 45cm grab rail (back of door)
- A4129AA Contour 21 shower mixer, thermostatic sequential lever operated build-in, chromium plated
- L6919 Shower diverter, chromium plated
- S6745 Multi System handset holder in White
- L7104 Elipse shower head 3 function, high pressure, chromium plated
- E4745AA Trevi flexible shower hose, chromium plated
- E4705AA Trevi wall elbow, chromium plated
- S9313AA Short projection fixed overhead shower
- S6725 Multi System 45cm handrail in White
- S6751 Multi System angled rail for shower curtain in White
- S675001 Multi System 1200 x 1200mm shower curtain
- S5093 Clothes hook, White only

**Colours**

As individual items:  
**grab rails available**  
 White (AC)  
 Blue (36)  
 Grey (LJ)  
 Stainless steel (MY)  
 Charcoal (RN)  
**Seat available:**  
 Grey (XK)

For LRV and RAL numbers see page 18:3:0

