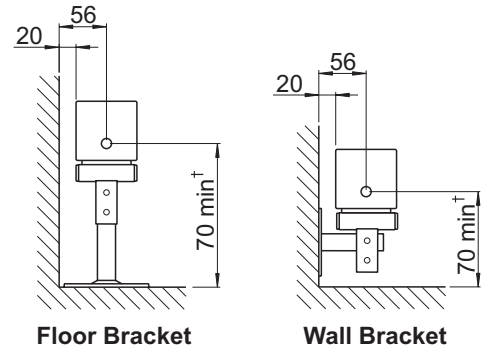
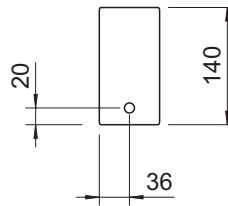
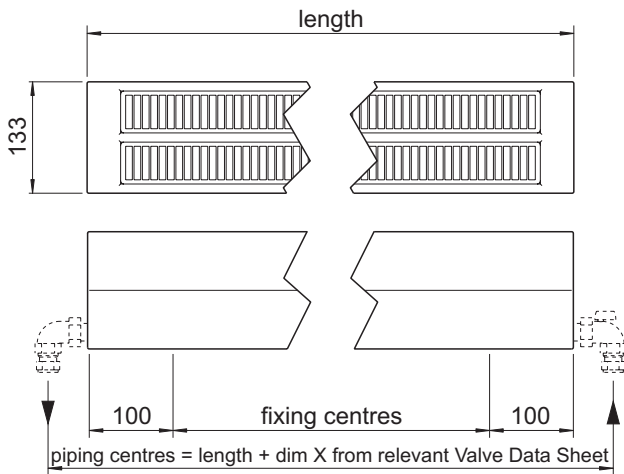


note: flow & return can be reversed if required

Model SS

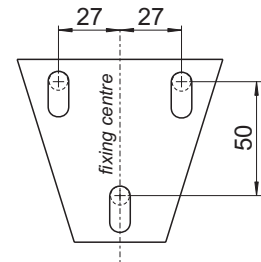
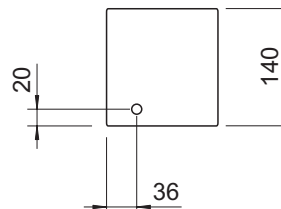


† this dim 90mm min for SD model



note: flow & return can be reversed if required

Model SD



Hole Pattern for Floor & Wall Bracket

All dimensions shown are in millimetres

- Test pressure: **5.2 BAR**
- Max working pressure: **4 BAR (6 or 10 bar available)**
- Max working temperature: **120° C**
- All steel construction: **2mm end header thickness**
1.25mm wall thickness
- Connections: **½ inch BSP opposite end tappings**

Heat output determined in accordance with EN 442

Reg. Number 3810E-3835E

Manufactured for Bisque by Arbonia AG of Switzerland

Model	Output ΔT=50K Watts	Output ΔT=60K Watts	n	Water Content litres	Weight kg	Height ± 2mm	Length ± 2mm	Depth ± 2mm	Fixing Centres ± 2mm
SS 14-100	510	647	1.30	2.3	12	140	1000	72	800
SS 14-120	613	776	1.30	2.8	14	140	1200	72	1000
SS 14-140	760	963	1.30	3.2	17	140	1400	72	1200
SS 14-160	817	1035	1.30	3.7	19	140	1600	72	1400
SS 14-200	1021	1294	1.30	4.6	23	140	2000	72	1800
SD 14-100	825	1044	1.29	3.4	19	140	1000	133	800
SD 14-120	990	1253	1.29	4.1	23	140	1200	133	1000
SD 14-140	1229	1555	1.29	4.8	27	140	1400	133	1200
SD 14-160	1321	1671	1.29	5.4	30	140	1600	133	1400
SD 14-200	1651	2088	1.29	6.8	38	140	2000	133	1800