

Collage (CC1)

# Mini Fixed Bath Screen

## Instruction Manual



### Truelife Consumer Guarantee

Please make sure the purchaser/end user completes and returns the Guarantee card which is enclosed with this product or registers on line at [www.roman-showers.com/register\\_guarantee.htm](http://www.roman-showers.com/register_guarantee.htm). Failure to validate the Roman Truelife Guarantee will mean only the 1 Year Statutory Guarantee will apply.

PRODUCT CODE REF:

### IMPORTANT

- Please ensure the consumer guarantee card enclosed with this product is completed and returned to Roman; please ensure the end user retains this manual.
- Please read these instructions carefully prior to attempting installation.
- Unpack and handle the product with care to avoid damage to the product finish.
- Check for hidden electrical cables and water pipes prior to commencing any drilling work.
- Ensure the walls where the Bath Screen is to be fitted are vertical (if walls are not completely vertical there is **15mm** of adjustment within the Wall Profile). **Note: It is recommended that the walls are tiled after the Bath is fitted and grouted before fitting the Bath Screen. This will help provide maximum adjustment and will aid sealing.**
- No attempt should be made to rework toughened safety glass.
- Pictures used are for illustration purposes only; product designs may alter slightly as a result of continuing product development.
- The Mini Fixed Bath Screen is designed for a shower head to be positioned **only** at the end of the Bath - ensuring the spray is aimed down the full length of the Bath at all times.
- Suitable only for all standard Bath Mixers and Electric Showers (non-pumped).

#### Component Check List: Supplied

Ref	Description	Quantities
A	Wall Profile	1
B	Mini Fixed Bath Screen	1
C	Infill Trim	1
	<b>Fitting Pack</b>	
D	3mm Drill Bit	1
E	40mm Screws	3
F	16mm Screws	3
G	Wall Plugs	3
H	Roman Branding Badge	1

#### Equipment Checklist: Not Supplied

Electric Drill
6mm Masonry Drill Bit
Bathroom Sealant Gun
Bathroom Sealant Tube
Screwdriver
Spirit Level
Tape Measure
Pencil
Wall Plugs (Plasterboard)

### Before Assembly and Installation of the Mini Fixed Bath Screen

- Check to see that you have the correct Bath Screen for your Bath. This can be done by referring to the label on the side of the product packaging.
- Ensure all parts are in the packaging by checking them against the parts and quantities shown on the component check list above.
- Check the product for defects. Installation queries on damaged parts can not be resolved once the installation has been completed.
- The Bath must be completely sealed along tiled walls, fitted level (check with a Spirit Level) and should have no leaks.

**Notes:** It is recommended that the Wall Profile be fitted directly onto tiles or a similar sealed surface. If walls or Bath or a combination of both are out of level you will not achieve full adjustment of maximum width. Roman do not stipulate where the British Standard Safety Kite Mark should be positioned on the glass panels when being factory assembled.



Figure A

- ① Ensure the Bath is completely level - check for any movement in the Bath by standing in it. Fill the Bath with water to check all plumbing for leaks.

*Note: Please ensure the Bath is installed as per Manufacturer's Instructions.*



Figure B

- ② Fill the Bath with water and fully seal the Bath along the tiled walls with a Bathroom Sealant (not supplied). Once the Bath is fully sealed you must leave for at least 24 hours prior to commencing installation of the Mini Fixed Bath Screen.

*Note: Prior to commencing installation of the Bath Screen and once the sealant has cured, spray the shower handset around all joints to check for leaks.*

## Mini Fixed Bath Screen

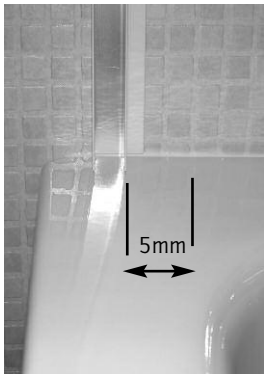


Figure a1



Figure a1i

- ① Decide which side of the Bath you want your Mini Fixed Bath Screen (B) to be positioned. Fit the inner edge of the Wall Profile (A) 5mm in from the inside edge of the Bath (Figure a1). Ensure the Wall Profile is completely vertical using a Spirit Level. Mark the holes with



Figure a2

- ② Drill the wall with a 6mm Masonry Drill Bit (not supplied) where the Wall Profile (A) is to be positioned. Fit the Wall Plugs (G) (if going into a brick or block wall). If going into a plasterboard wall you will need to purchase appropriate wall fixings. Wipe clear all debris before referring to the next stage.



Figure a3

Figure a3i

Figure a3ii

- ③ Where the Wall Profile (A) is to be positioned onto the Bath, place a bead of Bathroom Sealant (not supplied) the width of the Wall Profile along the tiled wall (Figure a3/a3i). Screw fix the Wall Profile to the wall using the 40mm Screws (E). Ensure the Wall Profile stays completely vertical throughout this procedure using a Spirit Level (Figure a3ii).

*Note: No Bathroom Sealant should be present between the Wall Profile and the tiled wall vertically prior to screw fixing.*



Figure a4

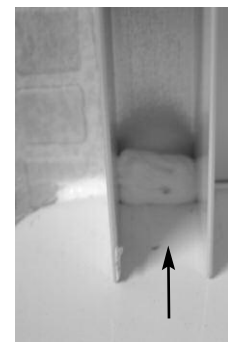


Figure a4i

- ④ Seal the gap between the Bath and the Wall Profile (A) with a Bathroom Sealant (not supplied) (Figure a4/a4i).

*Note: Failure to carry out this procedure correctly can result in serious water damage and is **not** covered by the 10-year manufacturer's guarantee.*

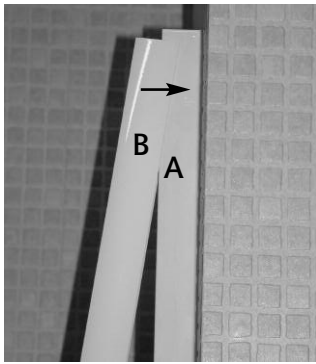


Figure a5

⑤ Slide the Mini Fixed Bath Screen (B) over the top of the Wall Profile (A) (Figure a5).

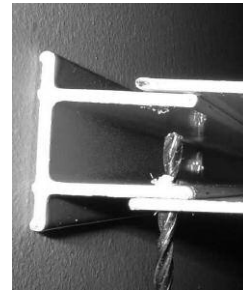


Figure a6



Figure a6i

⑥ Ensure the Mini Fixed Bath Screen (B) overlaps the Wall Profile (A) by at least 5mm (Figure a6). Inside the Bath drill three holes through the Mini Fixed Bath Screen into the Wall Profile with the 3mm Drill Bit (D). The three holes should be drilled through the Mini Fixed Bath Screen in the pre-drilled holes into the Wall Profile. The Mini Fixed Bath Screen must remain completely vertical throughout this procedure using a Spirit Level (not supplied) (Figure a6i).

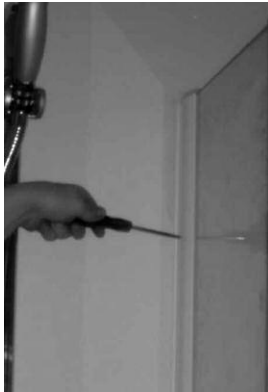


Figure a7

⑦ Screw fix the 16mm Screws (F) into the holes drilled in Stage 6. Ensure the Screws are fully tightened with a Screwdriver (Figure a7).

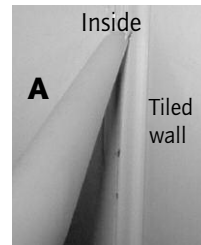


Figure a8



Figure a8i

⑧ Seal both sides of the Wall Profile (A) vertically, inside and outside only where they meet the tiles (Figure a8/a8i) Then fully seal the Mini Fixed Bath Screen (B) along the Bath top from the outside only (Figure a8i).

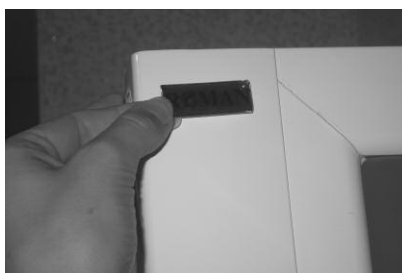


Figure a9

⑨ Ensure the Roman Branding Badge (H) is placed prominently on a non-moving aluminium part (Figure a9).



Figure a10

⑩ Once the Bathroom Sealant has cured, press fit the Coloured In-Fill Trim (C) into the vertical groove of the Mini Fixed Bath Screen (B) (Figure a10) to conceal the 16mm Screws (F) that were screw fixed in Stage 7.

## Maintaining Your Enclosure

DO NOT use acidic based descaler products or products which are unsuitable for cleaning enamel surfaces, including abrasive cleaners or cleaners containing bleach or solvents, as these products will affect both the anodised and coated framework.

NEVER use scouring powder or pads or sharp instruments when cleaning the enclosure.

Roman Shower Enclosures and Bath Screens are designed for luxury showering and with care and attention you can keep them looking new for longer by using the strongly recommended **Roman Ultra Care**, the multi-purpose glass protector after cleaning (*See back page*). Alternatively, occasionally wipe your Roman Shower Enclosure with a mild detergent diluted with water and polish with a soft cloth. If you live in a hard water area, periodically clean with a 50/50 solution of white vinegar and soak for five minutes and remove any limescale residue by rinsing with warm water. Periodically clean the seals of your Enclosure with an anti-bacterial spray. This is all you require to keep the glass, seals and coated / anodised aluminium parts looking new.

**If you have any problems with your Mini Fixed Bath Screen once installed, please refer back to this Instruction Manual to ensure you have completed every stage correctly. In addition, a Trouble Shooter Guide has been provided in this Manual.**

**If you still experience any difficulties or have any queries please contact us on +44 (0) 1325 328034 for technical assistance.**

## Collage - Mini Fixed Bath Screen Trouble Shooter Guide

Problem		Solution
Leaking	①	Check the gap between the Bath and the Wall Profile has been sealed correctly (Figure a4/a4i).
	②	Ensure the Bath is fully sealed along the tiled walls prior to installation (Figure B).
	③	If the Mini Fixed Bath Screen is sealed on the inside along the Bath top, this will cause leakage – the sealant must be removed.
	④	Ensure the Wall Profile on the tiled wall is sealed vertically inside and outside where it meets the tiles only (Figure a8/a8i).
	⑤	Ensure the outside gap between the Mini Fixed Bath Screen and Bath top is fully sealed (Figure a8i).
	⑥	Is the Wall Profile fitted 5mm approx. from the inside edge of the Bath top (Figure a1/a1i)?
Mini Fixed Bath Screen alignment on Bath	①	Is the Mini Fixed Bath Screen fitted onto a tiled wall?
	②	Is the Wall Profile fitted 5mm approx. from the inside edge of the Bath top (Figure a1/a1i)?
	③	Is the Wall Profile completely vertical?

# Other products available from Roman



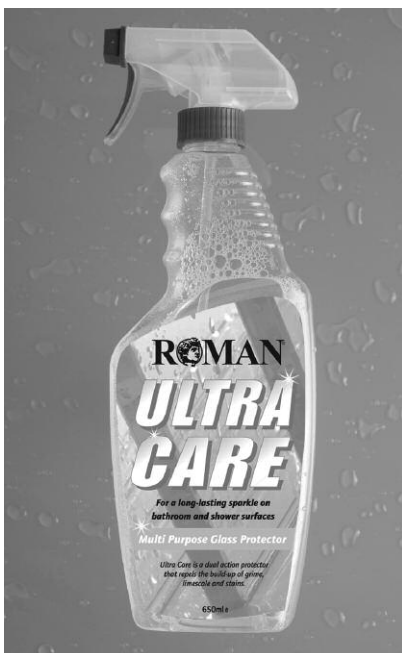
*Orbital Three in Bright Silver CO313S/L with Clear Glass. Also available in White CO313W. Shower Tray: 1150mm x 650mm Roman Tray RT031/R with integral tiling lip. Handing of enclosure and tray must be specified.*

Unique is an over-used term these days. But not so when describing the Orbital Three. To begin with its 1150mm x 650mm size brings a new dimension in space optimisation whereby limited wall space is converted into maximum showering area. The expansive shape and massive door combine to create a showering enigma where space is fashioned as if from nowhere. Styled in 6mm curved glass, the shape of the Orbital Three brings a new and unusual showering solution.



*Hinged Door with Unprinted Clear Glass and Bright Silver Frame - CL135. Also, Shower Tray: 800 x 800mm - Colour - White - RA851.*

The Roman Hinged Door uses 8mm thick glass to offer a sophisticated and contemporary outward opening option. When installed in a 3 wall aperture (as shown) the top rail of the frame can be removed to allow unrestricted height access - and the stunning edgework of this frameless Door becomes obvious. The Door closes onto twin ball catches for a solid closing action and is fully sealed for all showering systems. Four sizes are available - a 760mm/Neo-Angle option; 800mm; 900mm and 1000mm.



## ULTRA CARE

THE MORE YOU SPRAY – THE MORE YOU PROTECT.

Roman Ultra Care is a product from Roman designed to give all your shower and bathroom surfaces a long-lasting sparkle. The benefit of Ultra Care is the more you spray, the more you protect.

Ultra Care is a multi-purpose glass protector that repels the build-up of grime, limescale and stains.

Roman Ultra Care was developed for Roman shower enclosures and screens. It is a unique and effective non-filming formula for all glass surfaces, tiles, shower seals and aluminium frames, taps, trays and baths.

***Why not try it on your car windscreen!***

**For your nearest stockist please call +44 (0) 1325 328034**

**ROMAN LIMITED, WHITWORTH AVENUE, AYCLIFFE INDUSTRIAL PARK, COUNTY DURHAM, DL5 6YN, ENGLAND, UK.**

Member of



<b>GENERAL RECEPTION:</b>	<b>PHONE +44 (0) 1325 311318</b>	<b>FAX +44 (0) 1325 319889</b>
<b>CUSTOMER SERVICES:</b>	<b>PHONE +44 (0) 1325 328034</b>	<b>FAX +44 (0) 1325 328031</b>
<b>SALES ENQUIRIES:</b>	<b>PHONE +44 (0) 1325 328033</b>	<b>FAX +44 (0) 1325 328027</b>

**[www.roman-showers.com](http://www.roman-showers.com)**