

ROMAN[®]

Freedom

Colossus

Instruction Manual



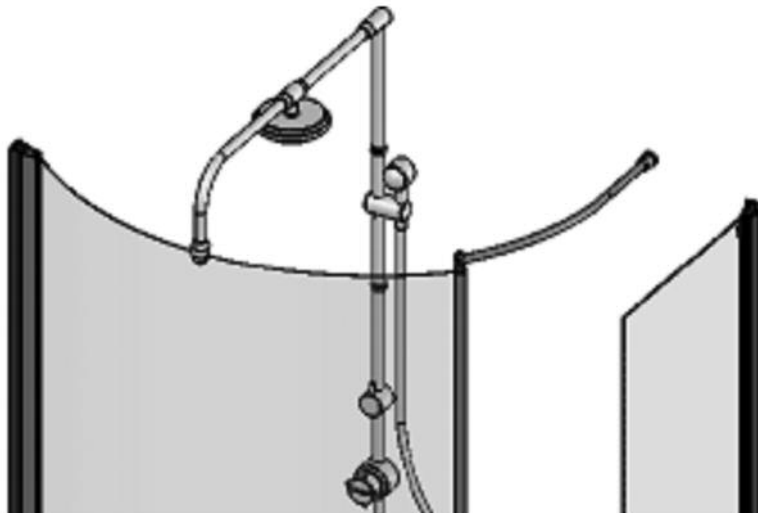
Truelife Consumer Guarantee

Please make sure the purchaser/end user completes and returns the Guarantee card which is enclosed with this product or registers on line at www.roman-showers.com/register_guarantee.htm. Failure to validate the Roman Truelife Guarantee will mean only the 1 Year Statutory Guarantee will apply.

PRODUCT CODE REF:

IMPORTANT PRE-INSTALLATION CHECKS

IMPORTANT: IF YOU ARE FITTING THIS PRODUCT WITH INTEGRATED WATER DELIVERY, THE VALVE MUST BE INSTALLED BEFORE TILING THE SHOWERING AREA AND BEFORE THE INSTALLATION OF THIS PRODUCT.



1. Check you have the correct enclosure and tray. Please look at the labels on the side of the product packaging.
2. Check all the product components are in the box and the fixing kits are complete. Please check this with the component check list overleaf.
3. Un Pack your Roman product and handle it with care.
4. Please check the product for defects or damage. Once the installation has commenced Roman cannot accept responsibility for any defects or damage to the products.
5. Please take the time to read these instructions prior to installing your Roman Product.
6. Before you commence any drilling check there are no hidden electrical cables and/or water pipes in the walls.
7. No attempt should be made to re-work the toughened safety glass.
8. The installation should be performed by two persons.
9. It is strongly recommended the walls the Roman product is going to be installed on are vertical. However the wall profiles have 25mm of adjustment to help compensate for some deviation.
10. It is strongly recommended the Roman product is fitted on tiled surface or similar waterproof surface.
11. It is strongly recommended the walls are tiled and grouted after the installation of the tray and before the installation of the Roman product. This will provide maximum adjustment and help when sealing the product.
12. If the walls and/or the tray are not level you will not achieve maximum adjustment of the product.
13. Pictures used are for illustration purposes only, product designs may alter slightly as a result of continuing product development.
14. Roman do not stipulate where the European Standard Kite Mark should be positioned on the glass panels when being factory assembled.

Component Check List: Supplied

Description	Quantity	
	FC13	FCG13
Curved Panel	1	1
Side Panel		1
Wall Profiles	1	2
Wall Profile Trims	1	2
Brace Bar Assemblies	1	1

Fixing Kit - Component Check list.

40mm Screws	4	7
Wall Plugs	4	7
16mm Pan Head Screws	3	6
Roman Branding Badge	1	1
Profile Cover Caps	2	4
2.5mm Allen Key	1	1
3mm Allen Key	1	1
3mm Drill Bit	1	1
Location Pin	1	1

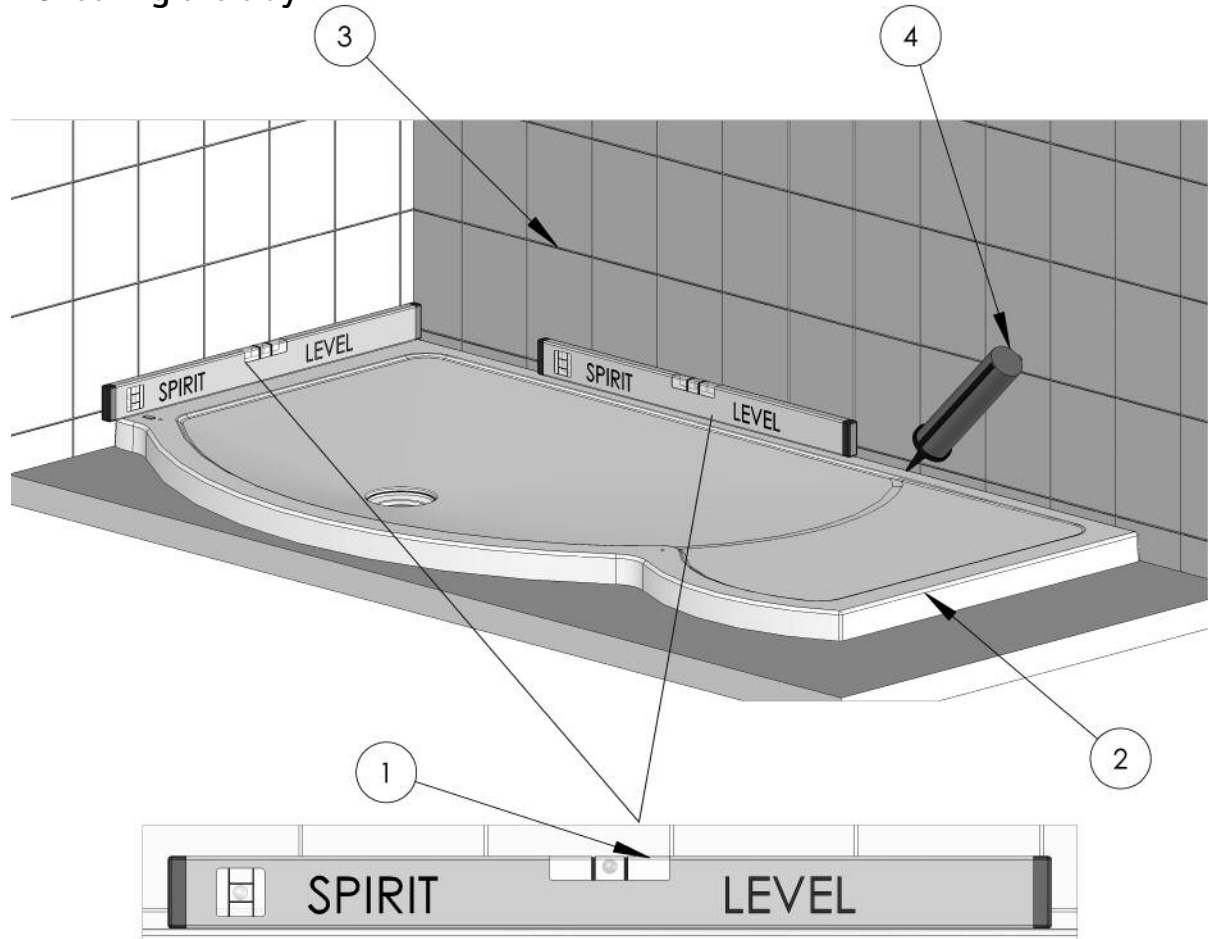
Equipment Check List: Not Supplied

Description

Mains or battery drill.
6mm masonry drill bit.
Bathroom sealant gun.
Bathroom sealant tube.
Pozi Screw driver.
Flat Head Screw Driver.
Spirit levels.
Tape measure.
Pencil.
Additional fixings if going into plaster board.

IMPORTANT PRE-INSTALLATION CHECKS

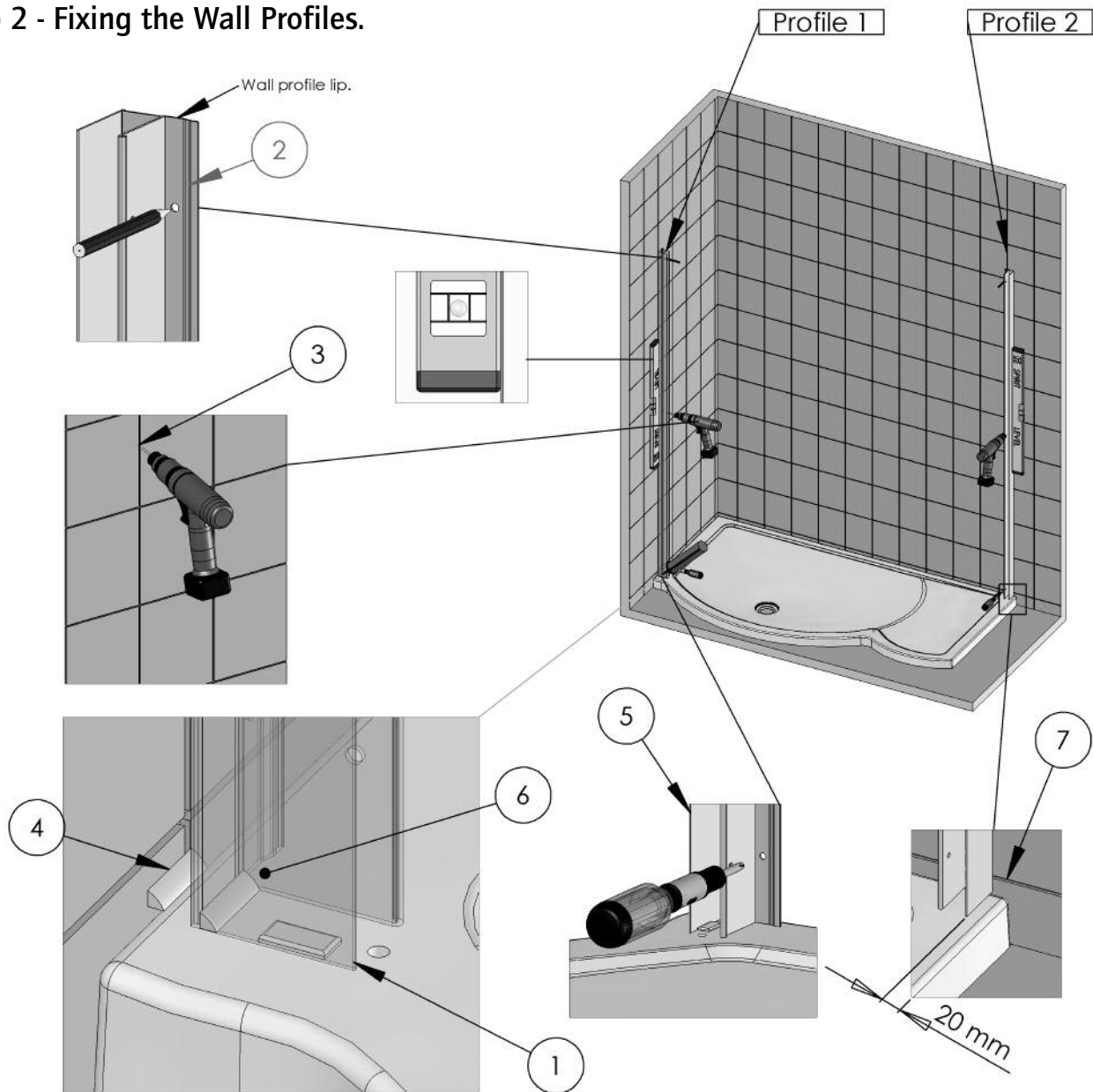
Step 1 - Checking the tray



1. Check the tray is level, on all sides (The bubble should be in the centre of the two lines on the spirit level).
2. Stand in the tray and check there is no adverse movement.
3. The walls should be tiled and grouted prior to installing the enclosure.
4. The tiles and the tray should be sealed, using bathroom sealant.

- Spray the seal and joints with the shower head and check for leaks.
- Check the plumbing for leaks.
- Do not grout the tiles when the enclosure has been fitted as the grout may discolour the aluminum profiles.
- Make sure the tray is installed as per the manufacturers instructions.
- When all of the above criteria is complete please proceed to the next step in these instructions.

Step 2 - Fixing the Wall Profiles.



Fix Wall Profile: 1

1. Position the wall profile using the guide on the tray. The lip of the profiles face towards the inside of the enclosure (look at point 2 above).
 - The wall profiles must be vertically level, check using a spirit level. (The bubble should be in the centre of the two lines on the spirit level).
2. Mark the locations for the drill holes using a pencil.
 - Use the supplied wall plugs if fixing the wall profiles into brick or block work, if fixing into plaster board, the appropriate fixings will need to be used.
3. Drill the holes using 6mm masonry bit (not supplied). Then push the wall plugs in beyond the depth of the tile
4. Apply sealant the width of the wall profile, at the bottom where it meets the wall and the tray. (Important: failure to carry out this procedure can cause serious water damage and is not covered by the guarantee).
5. Fix the Wall Profile using the 40 mm screws (supplied).
6. Apply Sealant to the inside of the wall profile, where it meets the tray. (Important: failure to carry out this procedure can cause serious water damage and is not covered by the guarantee).

Fix Wall profile: 2

7. Follow points 1 - 6 to fit wall profile 2, except take the 20mm measurement for the profile location (point 7).

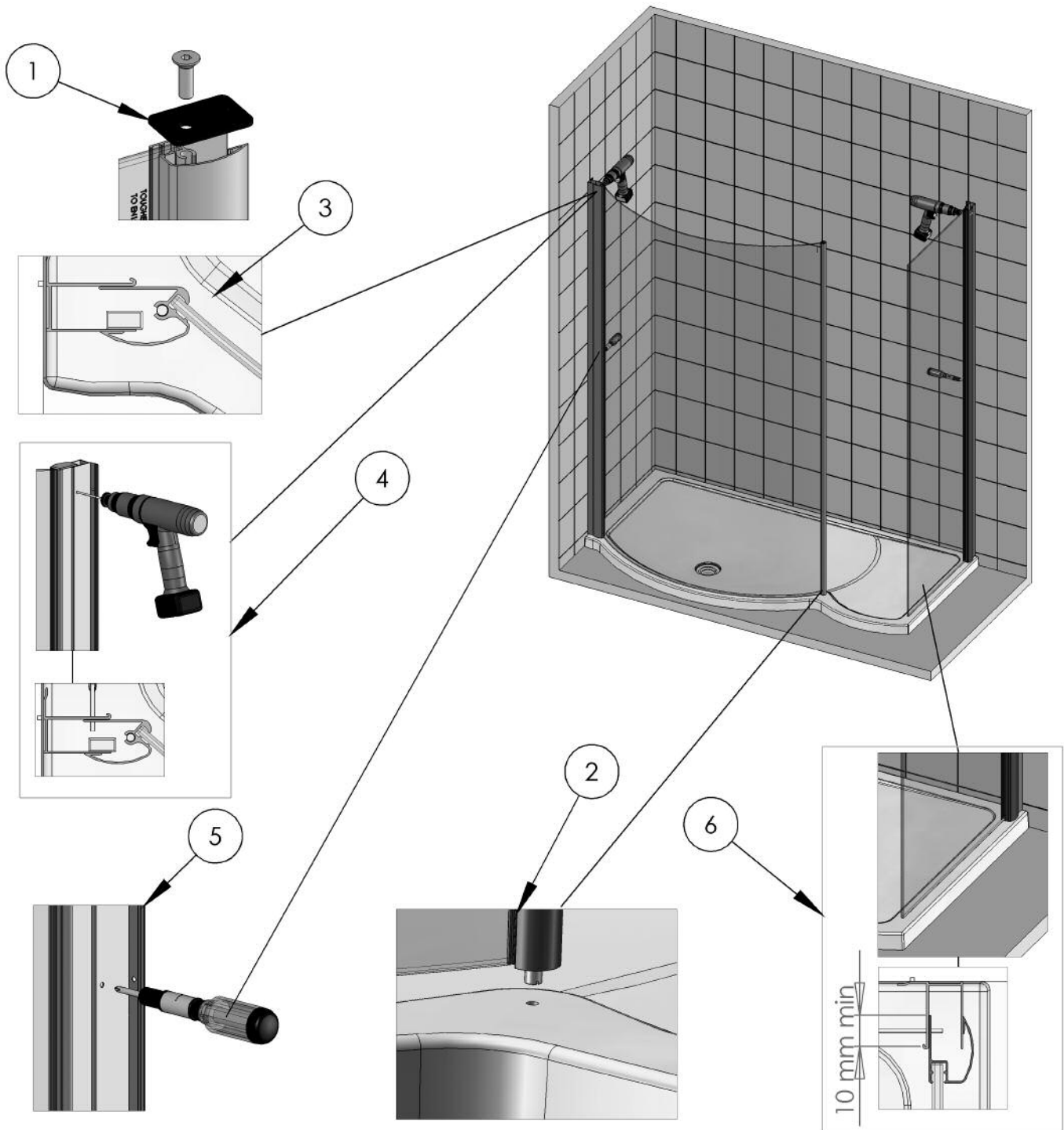
Info:

- (If you are fitting the enclosure straight to floor see the guidance page at the back of these instructions).



Step 3 - Fix the Curved Panel (and end panel if applicable)

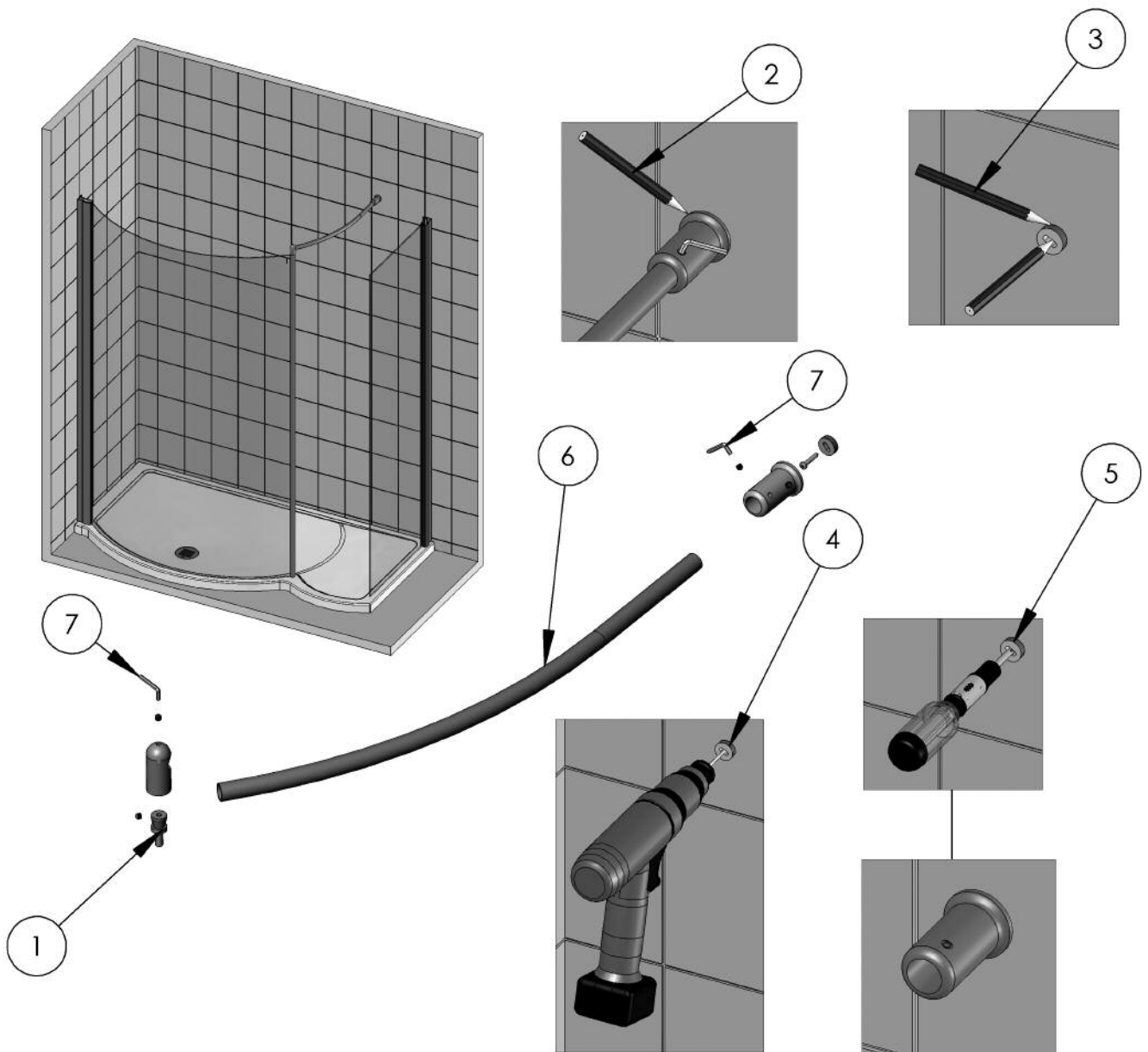
(Please ensure the transport bands are removed with care from the glass panels in this and the following steps.)



1. Remove the black transit caps from all the glass panels.
2. Screw the location pin into the curved profile that is assembled onto the large curved piece of glass.
3. Offer the Curved panel into location in the wall profile and position the location pin into the hole in the tray.
4. Drill through the pre-drilled holes of the wall profile using a 3mm drill bit.
5. Fix the panel into wall profile using the supplied 16mm pan head screws.
6. Offer the Side panel into location on the tray and in the wall profile; make sure the glass is running parallel to the side of the tray, and is sitting horizontally along the tray. (Fix side panel repeating points 4 and 5).

- (If you are fitting the enclosure straight to floor see the guidance page at the back of these instructions).
- (You may need help to perform the installation steps, particularly to lift and hold the glass panels in location).

Step 4 - Assemble the Brace Bar.

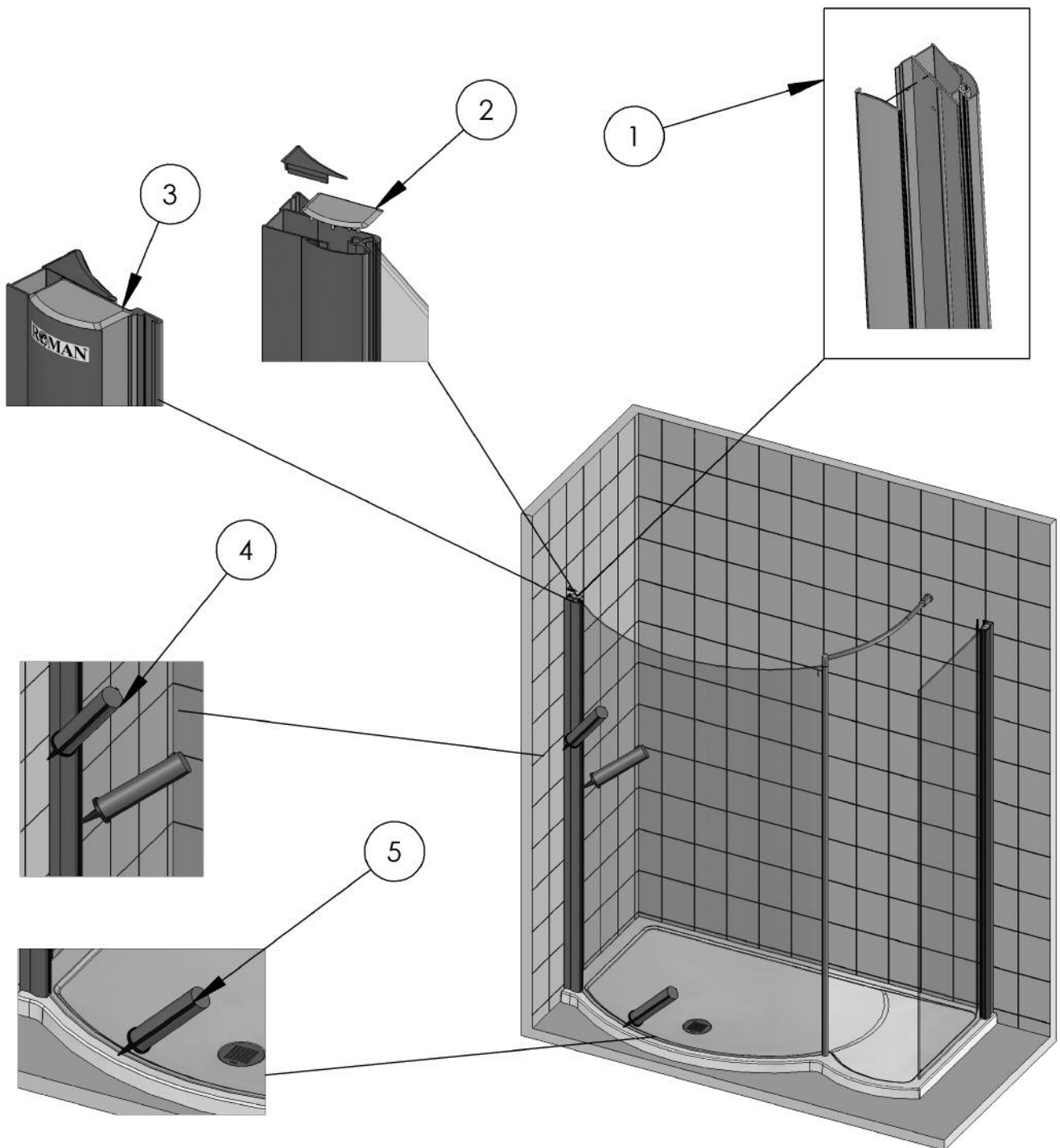


1. Disassemble the panel side location cup, and screw the brass insert into the profile on top the curved glass panel, then re-assemble the cup onto the brass insert. Don't tighten the allen key yet.
 2. Determine the location of the wall cup using the full brace bar assembly. Push the brace bar into location in the panel cup and slide the wall cup on the other end, mark the location using a pencil.
- **Make sure the brace bar is level. (The bubble should be in the centre of the two lines on the spirit level).**
3. Remove the brace bar and unscrew the brass insert from the wall cup. Hold the insert concentric to the pencil mark and mark the drill hole location.
 4. Drill the location hole using a 6mm masonry drill bit and insert the wall plug.
 5. Fix using a 40mm screw and then screw the wall cup onto the brass insert and tight up to the tiles.
 6. Re-assemble the bracing bar into the panel side cup and the wall cup.
 7. Tighten all the grub screws in the wall and panel cups using an Allen key when you are satisfied the brace bar has been adjusted correctly.

- **There is 25 mm of adjustment in the brace bar to allow correct alignment.**
- **The brace bar must be level (The bubble should be in the centre of the two lines on the spirit level).**
- **The Front Panel must be vertically level, make sure the brace bar is adjusted to achieve this. (The bubble should be in the centre of the two lines on the spirit level).**



Step 5 - Fix the Cover Caps and Seal the Enclosure



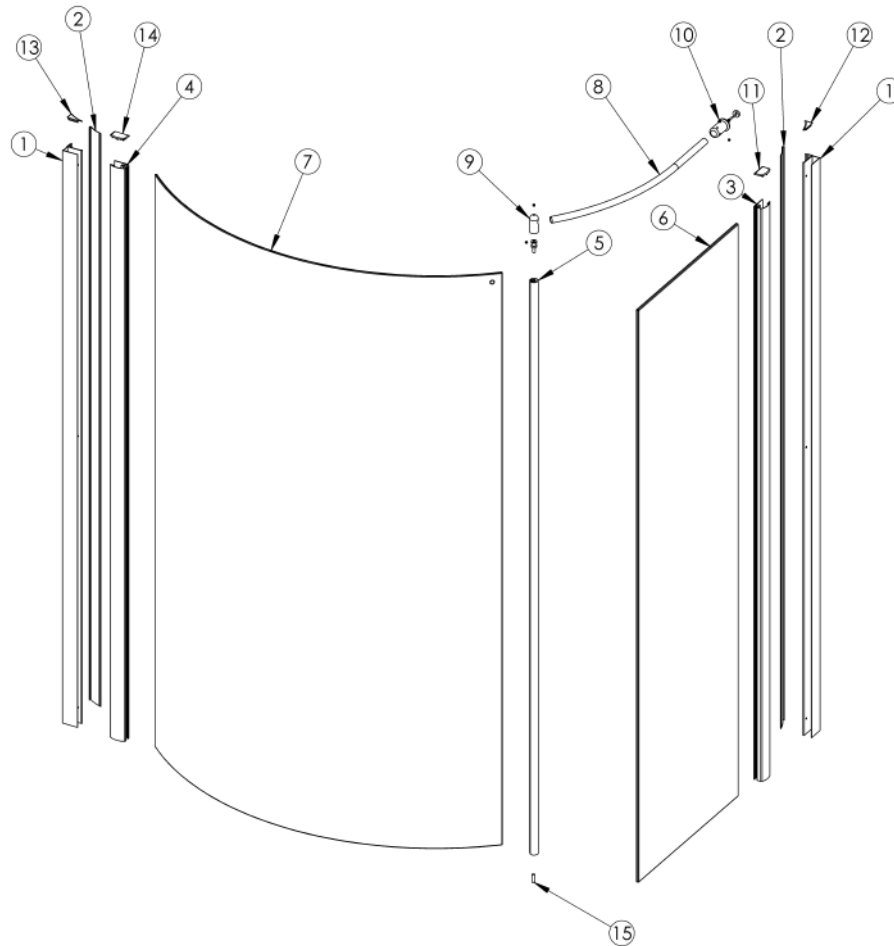
1. Clip on the wall profile cover trims. (They are designed to be a tight fit so take care).
2. Place all the cover caps on the profiles. (R and L on the inside of the caps indicate the handing of the caps looking from the outside of the enclosure)
3. Stick on the Roman Branding Badge.
4. Seal vertically the full length of the wall profiles/wall profile trims where they meet the tiles on the inside of the enclosure, using bathroom sealant. Also seal vertically the full length of the wall profiles where they meet the tiles on the outside of the enclosure, using bathroom sealant.
5. Seal horizontally the aluminum profiles and the glass panels on the outside of the enclosure, at the bottom where they meet the tiles and the tray, using bathroom sealant..

- (Please leave the sealant 24 hrs to cure before use).

IMPORTANT: Failure to carry out the procedure in Steps 4 & 5 can cause serious water damage and is not covered by the guarantee.

- If you are fitting the enclosure with integrated water delivery, please refer to your valve instructions to complete the installation.

Spare Parts: If you need to replace any damaged parts please see illustration below for parts list then call Customer Services on 01325 328034.



Item No.	Part Number	Colour	Description	Length (mm)	QTY
1	ROGWPS	Silver	Wall Profile	1900	2
2	ROG02S	Silver	Screw Cover Trim	1900	2
3	ROF01S	Silver	Vertical Frame	1900	1
4	ROF02S	Silver	Offset Vertical Extrusion	1900	1
5	ROF03S	Silver	Circular Profile	1900	1
6	OF01	Clear	8mm Toughened Glass	1899 x 575 x 8	1
7	OF02	Clear	6mm Curved Panel Glass		1
8	ROF12	Silver	Freedom 19mm Curved Brace Bar		1
9	RMC0074	Silver	Freedom Brace Joint		1
10	RMC0075	Silver	Freedom 19mm Wall Joint		1
11	RIM0206	Chrome	Vertical Cover Cap (R-H)		1
12	RIM0210	Chrome	Screw Cover Cap (R-H)		1
13	RIM0211	Chrome	Screw Cover Cap (L-H)		1
14	RIM0207	Chrome	Vertical Cover Cap (L-H)		1
15	RSCR48	White	Plastic Tray Pin	20	1

TROUBLE SHOOTING GUIDE.

Problem

Solution

LEAKING

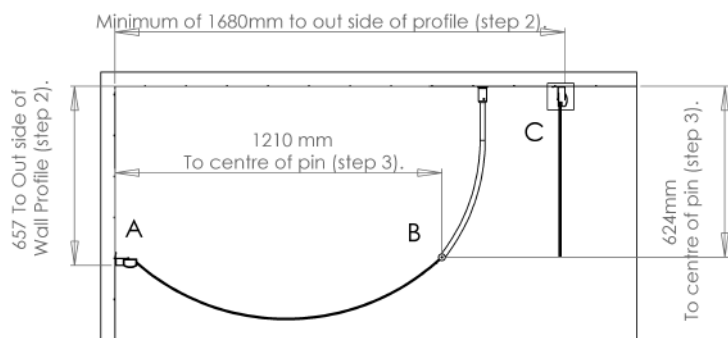
1. Check the enclosure has been sealed correctly as per the instructions:
2. The width of the wall profiles at the bottom where they meet the wall and the tray (Step 2).
3. Inside the wall profiles where they meet the tray (Step 2).
4. Vertically on the inside of the enclosure the full length of the wall profile/wall profile trims, where they meet the tiles (Step 5).
5. Vertically on the outside of the enclosure the full length of the wall profiles where they meet the tiles (Step 5).
6. Horizontally along the glass and aluminium on the outside only (Step 5).

ENCLOSURE

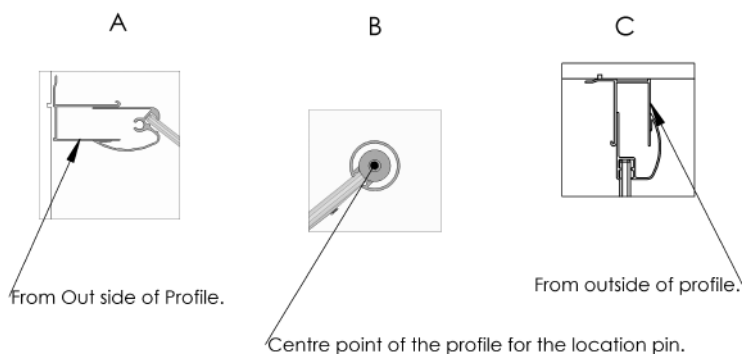
ALIGNMENT ON TRAY

1. Check the wall profiles have been installed as per the instructions: Make sure they are vertically level (Step 2).
2. Check the tray installation (Step 1).
3. Check the brace bar has been installed as per the instructions. Check the brace bar is level. Check the panels are vertically level (Step 4).

Straight to floor guidance:



Below: Detail views of the above dimensions.



The Location pins can be cut down from the non threaded end if required.



Locating the wall profiles and using the panel location pin (steps 2 and 3).

The measurements left need to be used to locate the wall profiles (step 2).

The location pin measurements left need to be used to locate the glass panel (step 3).

1. In order to use the location pin follow the measurements (left) to determine the position.
2. Drill an 9mm diameter hole with a recommended depth of 10mm, using suitable a drill bit.
3. Screw the location pin into the bottom of the curved profile on the large curved glass panel.
4. Continue with the installation by following the instructions.

Caution: Before you commence any drilling check there are no hidden electrical cables and/or water pipes under the floor and make sure you have enough depth in the floor to locate the pin. Do not puncture the wet room membrane during the drilling. If you are unsure about the installation seek professional advice.

Some important information to help you Maintain your Roman product.

The following information is all you need to keep your Roman Product looking new.

Roman Showering Products are designed for luxury showering and with care and attention you can keep them looking new for longer by using the strongly recommended Roman Ultra care. This is a multi-purpose glass protector that is applied after cleaning.

Alternatively you can clean your Roman Product using a mild detergent diluted in water and then polished off using a soft cloth.

If you live in a hard water area, periodically clean your Roman product using a 50/50 solution of white vinegar and water. The solution should be left on the enclosure for approximately 5 minutes then rinsed off using warm water. This method of cleaning should remove lime scale residue.

Simple maintenance.

Roman Products are generally maintenance free, however it may be necessary to lubricate wheel assemblies and other moving parts from time to time. It is strongly recommended that a quality silicone spray is used.

A list of Don'ts:

- 1 - Don't use acidic based products which are unsuitable for cleaning enamel surfaces.
- 2 - Don't use Abrasive cleaners or cleaners containing bleach or solvents, these products will adversely affect the finish of the aluminium profiles.
- 3 - Don't use scouring pads, powder or any sharp instruments when cleaning the enclosure.



ULTRA CARE

THE MORE YOU SPRAY – THE MORE YOU PROTECT.

Roman Ultra Care is a product from Roman designed to give all your shower and bathroom surfaces a long-lasting sparkle. The benefit of Ultra Care is the more you spray, the more you protect.

Ultra Care is a multi-purpose glass protector that repels the build-up of grime, limescale and stains.

Roman Ultra Care was developed for Roman shower enclosures and screens. It is a unique and effective non-filming formula for all glass surfaces, tiles, shower seals and aluminium frames, taps, trays and baths.

Why not try it on your car windscreen!

For your nearest stockist please call +44 (0) 1325 328034

ROMAN LIMITED, WHITWORTH AVENUE, AYCLIFFE INDUSTRIAL PARK, COUNTY DURHAM, DL5 6YN, ENGLAND, UK.



GENERAL RECEPTION: PHONE +44 (0) 1325 311318 FAX +44 (0) 1325 319889
CUSTOMER SERVICES: PHONE +44 (0) 1325 328034 FAX +44 (0) 1325 328031
SALES ENQUIRIES: PHONE +44 (0) 1325 328033 FAX +44 (0) 1325 328027

www.roman-showers.com