

ROMAN®

Orbital

Bath Screen

Instruction Manual



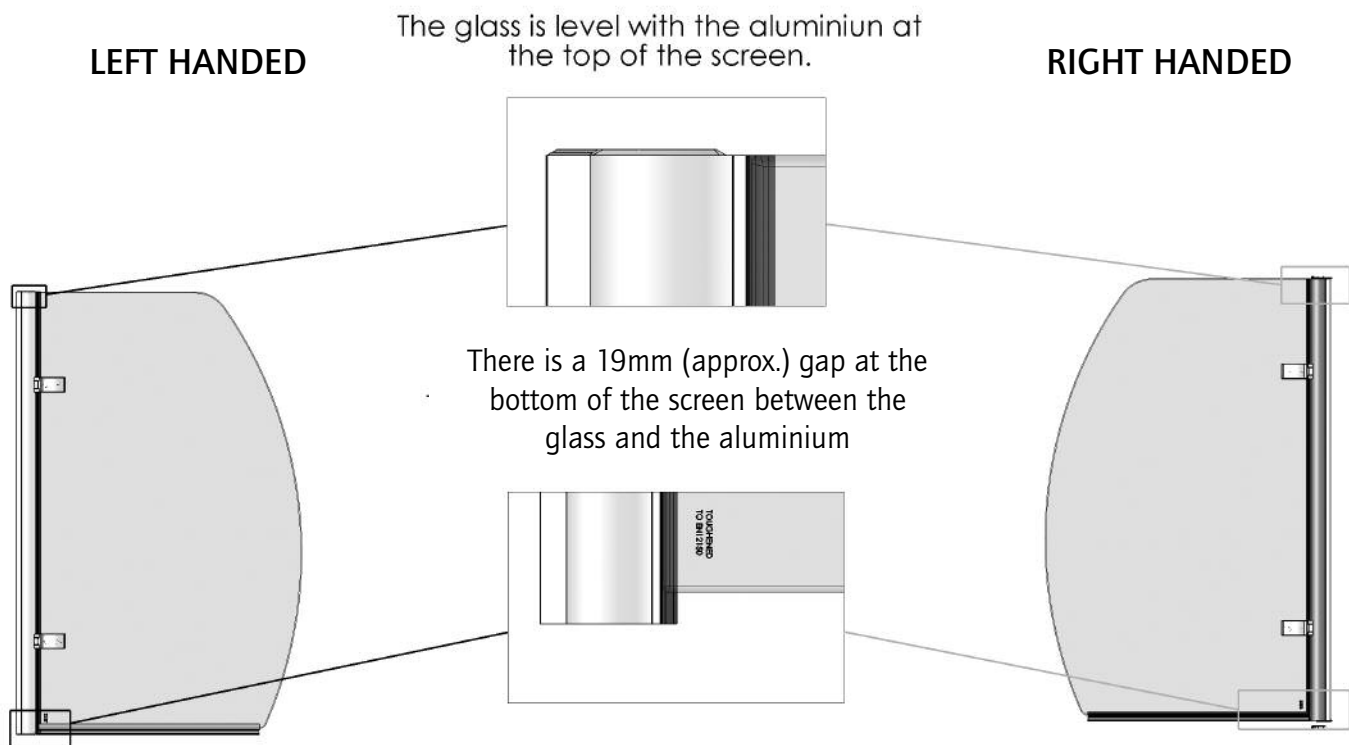
Truelife Consumer Guarantee

Please make sure the purchaser/end user completes and returns the Guarantee card which is enclosed with this product or registers on line at www.roman-showers.com/register_guarantee.htm. Failure to validate the Roman Truelife Guarantee will mean only the 1 Year Statutory Guarantee will apply.

PRODUCT CODE REF:

IMPORTANT PRE-INSTALLATION CHECKS

1. Check you have the correct hand bath screen. Please look at the labels on the side of the product packaging and use the illustrations below.



2. Check all the product components are in the box and the fixing kits are complete. Please check this with the component check list overleaf.
3. Un Pack your Roman product and handle it with care.
4. Please check the product for defects or damage. Once the installation has commenced Roman cannot accept responsibility for any defects or damage to the products.
5. Please take the time to read these instructions prior to installing your Roman Product.
6. Before you commence any drilling check there are no hidden electrical cables and/or water pipes in the walls.
7. No attempt should be made to re-work the toughened safety glass.
8. The installation should be performed by two persons.
9. It is strongly recommended the walls the Roman product is going to be installed on are vertical. However the wall profiles have 25mm of adjustment to help compensate for some deviation.
10. It is strongly recommended the Roman product is fitted on tiled surface or similar waterproof surface.
11. It is strongly recommended the walls are tiled and grouted after the installation of the bath and before the installation of the Roman product. This will provide maximum adjustment and help when sealing the product.
12. If the walls and/or the bath are not level you will not achieve maximum adjustment of the product.
13. Pictures used are for illustration purposes only, product designs may alter slightly as a result of continuing product development.
14. Roman do not stipulate where the European Standard Kite Mark should be positioned on the glass panels when being factory assembled.

Component Check List: Supplied

Description	Quantity
Bath Screen	1
Wall Profile	1
Wall Profile trim	1
PVC Bottom Seal and Extrusion	1
Linking Strip	1

Fixing Kit - Component Check list.

3 mm Drill Bit	1
40 mm Screws	3
Wall Plugs	3
Pan Head Screws	3
Roman Branding Badge	1
Profile Cover Caps	2

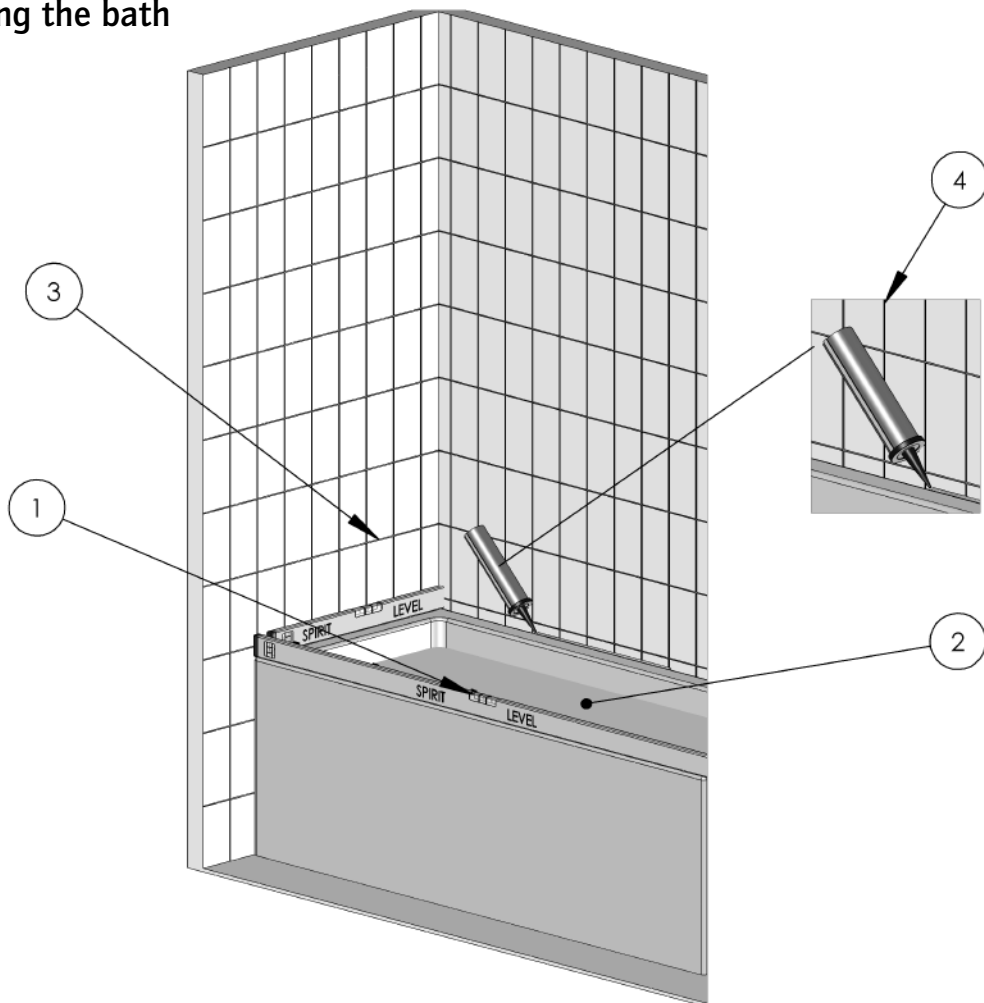
Equipment Check List: Not Supplied

Description

Electric or battery drill.
6 mm masonry drill bit.
Bathroom sealant gun.
Bathroom sealant tube.
Pozi Screw driver.
Flat Head Screw Driver.
Spirit levels.
Tape measure.
Pencil.
Additional fixings if going into plaster board.
Low Tac Tape.

IMPORTANT PRE-INSTALLATION CHECKS

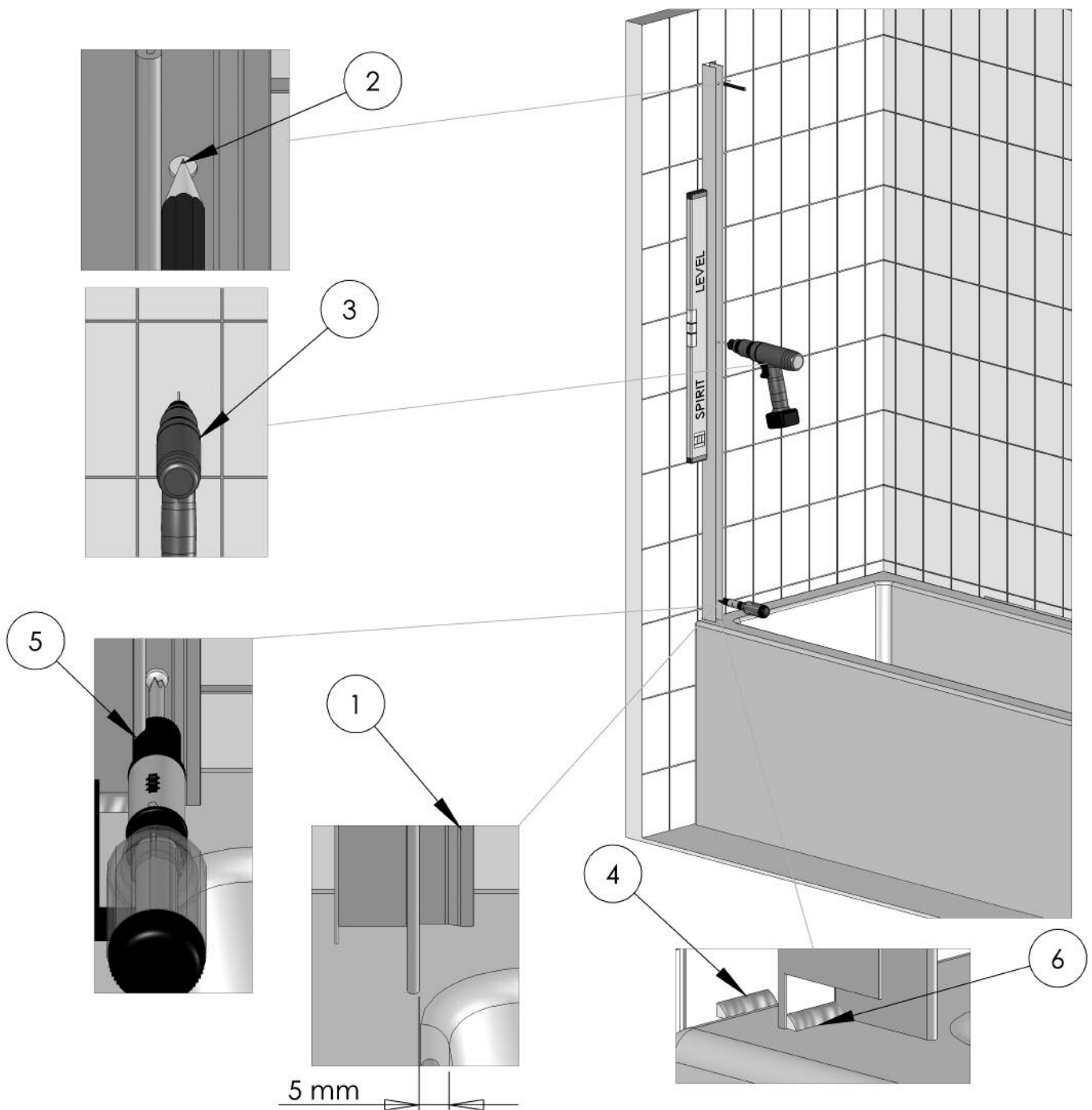
Step 1 - Checking the bath



- 1 Check the bath is level, on all sides (The bubble should be in the centre of the two lines on the spirit level).
- 2 Stand in the bath and check there is no adverse movement.
- 3 The walls should be tiled and grouted up to the bath.
- 4 The tiles and the bath should be sealed with the bath full of water, using bathroom sealant.
 - **Spray the seal and joints with the shower head and check for leaks when the silicone has cured.**
 - **Check the plumbing for leaks.**
 - **Do not Plasterboard over the bath.**
 - **Do not grout the tiles when the enclosure has been fitted as the grout may discolour the aluminum profiles.**
 - **When all of the above criteria is met please proceed to the next step in these instructions.**



Step 2 - Fixing the Wall Profile.

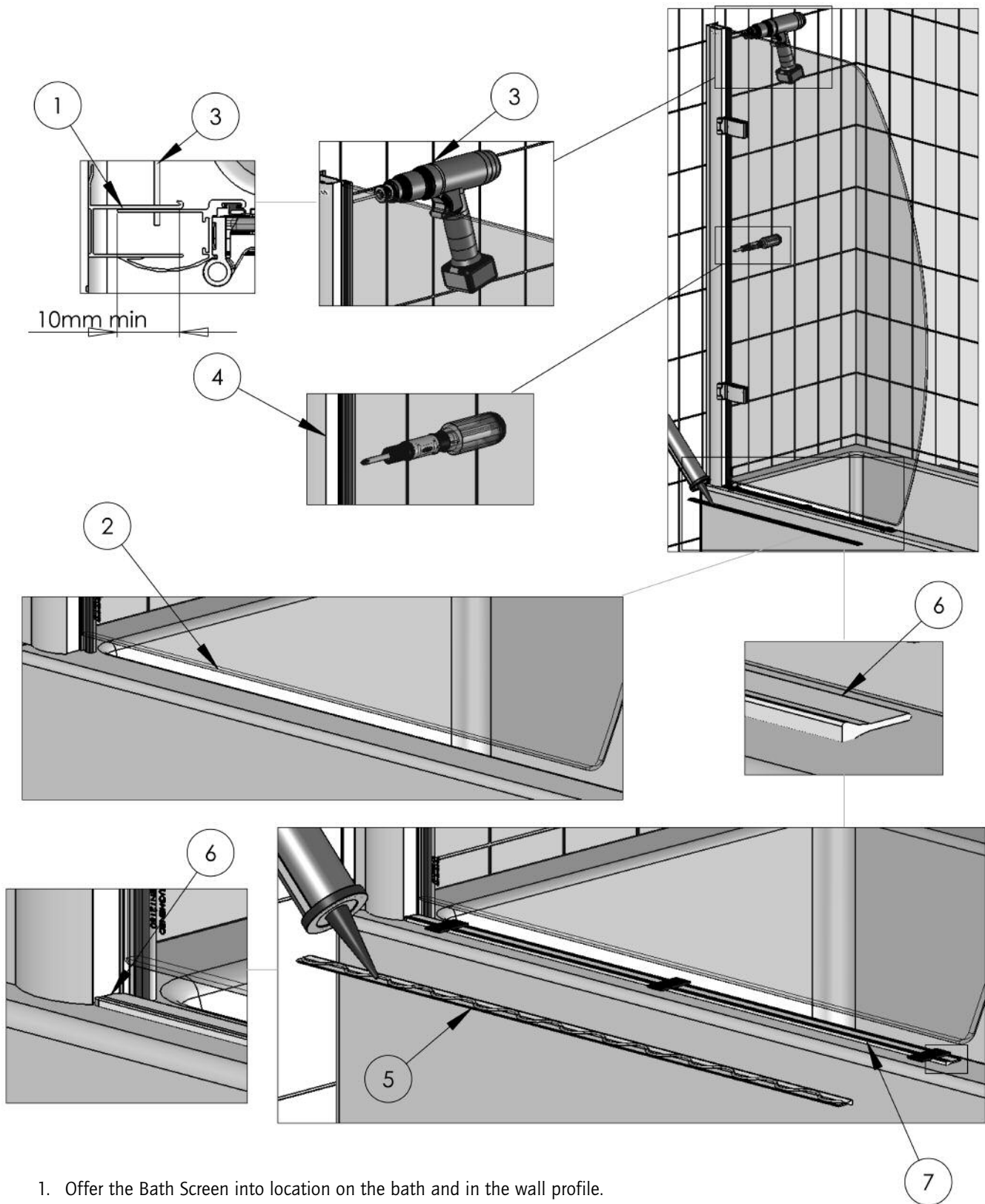


1. Position the wall profile 5mm from the inside edge of the bath. Take this measurement from the inside wall of the profile. The lip of the profile faces towards the inside of the inside of the bath.
2. Mark the locations for the drill holes using a pencil.
3. Drill the holes using 6mm masonry bit (not supplied). Then push the wall plugs in beyond the depth of the tile.
4. Apply sealant where the bottom of the wall profile will meet the bath and tiled wall.
5. Fix the Wall Profile using the 40 mm screws (supplied).
6. Apply Sealant to the inside of the wall profile where it meets the bath.

- The wall profiles must be vertically level. (The bubble should be in the centre of the two lines on the spirit level).



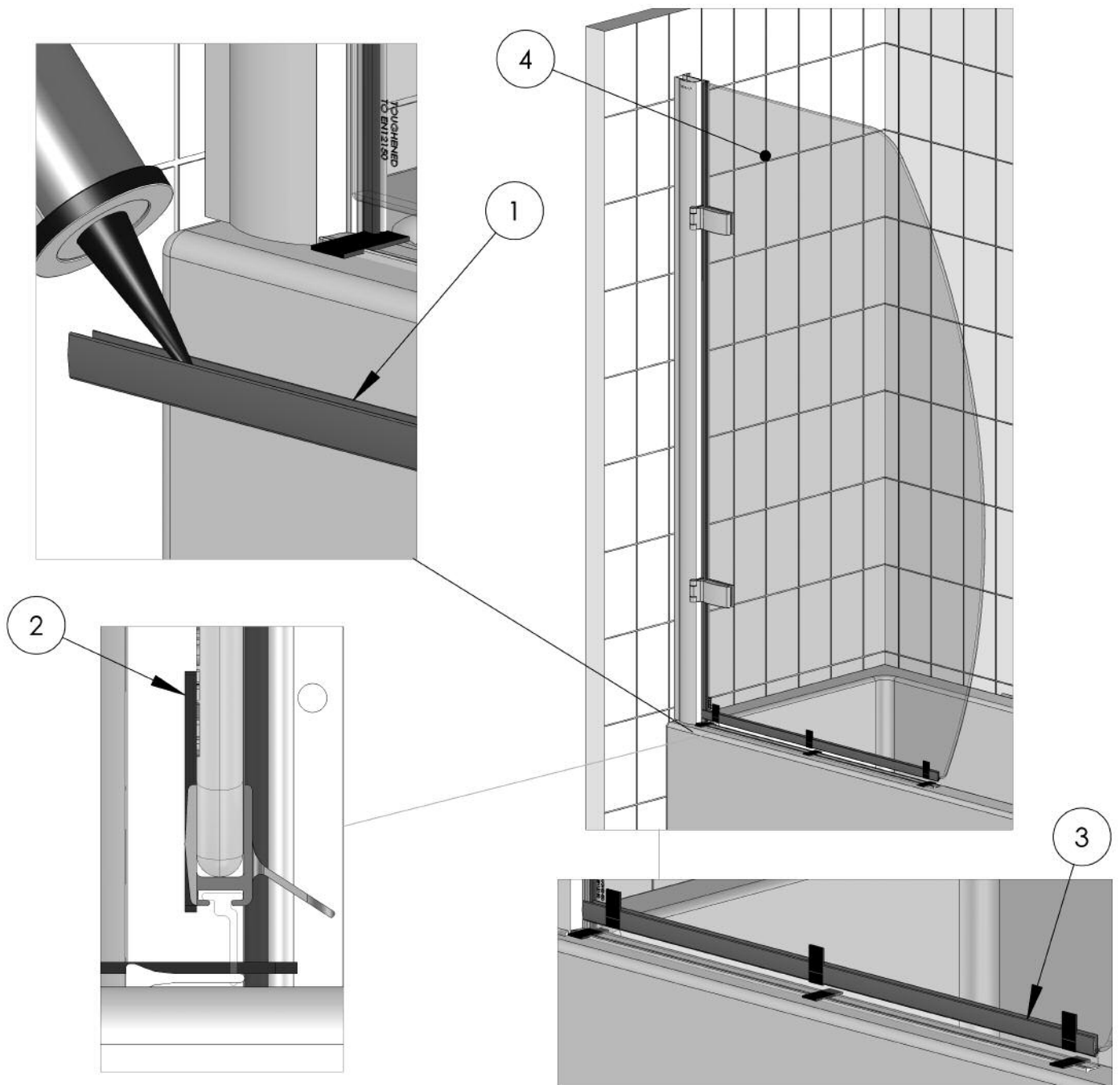
Step 3 - Locating and Fixing the Bath Screen



1. Offer the Bath Screen into location on the bath and in the wall profile.
2. Check the gap between the glass and the bath is parallel; along the full length of the glass.
3. Drill through the pre-drilled holes of the wall profile using the 3mm drill bit.
4. Fix the Screen into wall profile using the supplied 16mm pan head screws.
5. Run a bead of sealant down the length of the bath top seal.
6. Position the bath top seal on the bath, so it locates against the profile of the Screen and runs parallel with edge of the bath. (Make sure the fall of the strip faces the inside of the bath).
7. Tape the bath top seal on the bath using a low tack tape positioned at each end, and in the centre of the Strip.

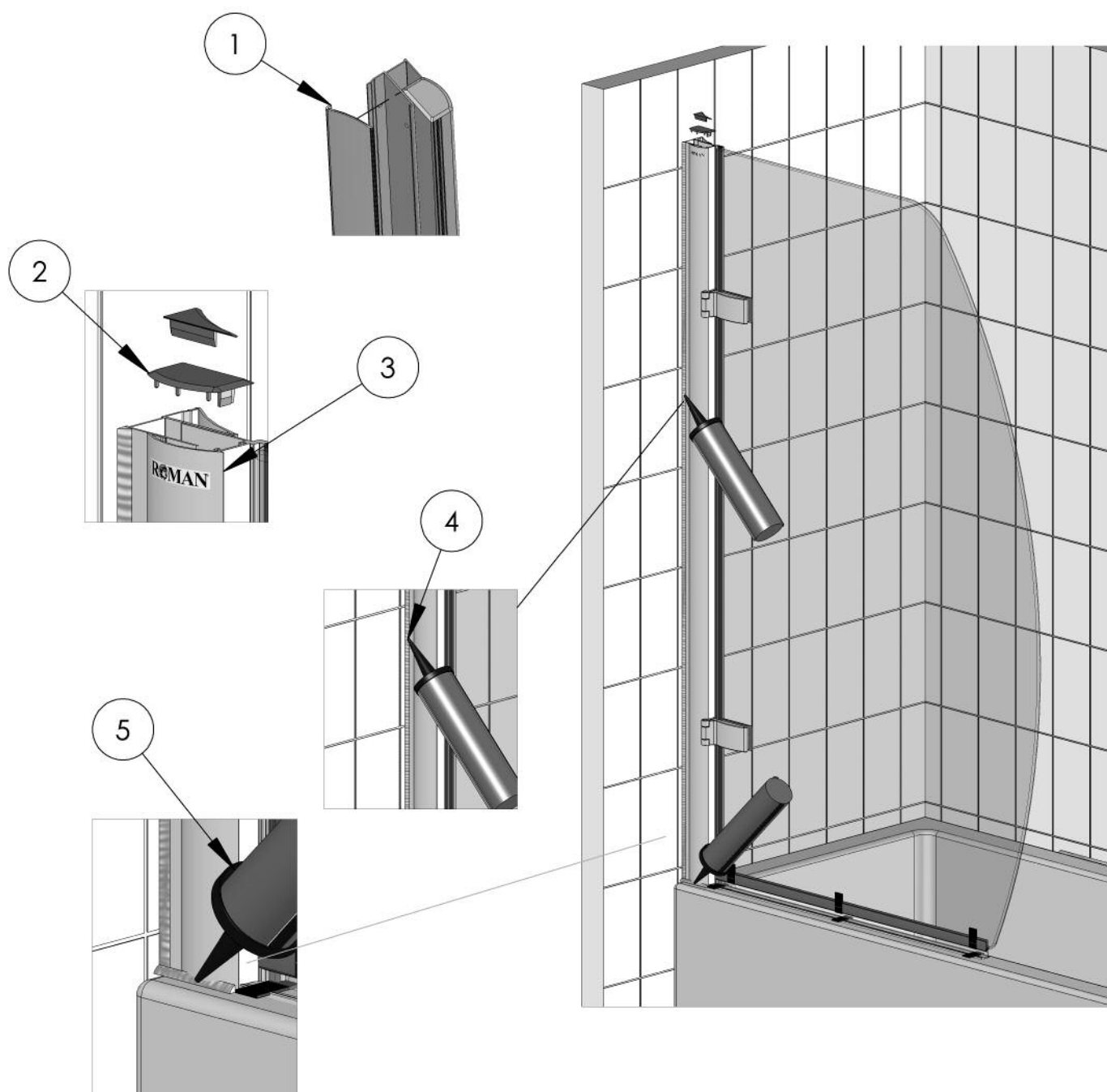
- (You may need help to hold the screen in location while you drill and fix the screen to the wall profile).
- (Clean away the excess silicone from the bath).
- (Please leave the sealant 24 hrs to cure before use)

Step 4 - Assemble the Bottom Seal Extrusion



1. Take the Bottom Seal extrusion and apply a thin bead of silicone down both internal walls.
2. Make sure the deflector strip is on the inside of the Screen and push the extrusion onto the glass. Hold for a few moments.
3. Use some Low tack tape to hold the Bottom Seal Extrusion in position. Use a strip at each end and one in the centre, leave for a minimum of two hours to cure.
 - (Clean away the excess silicone from the screen).
 - (Please leave the sealant 24 hrs to cure before use).
4. Close the bath screen.

Step 5 - Fix the Cover Caps and Seal the Screen

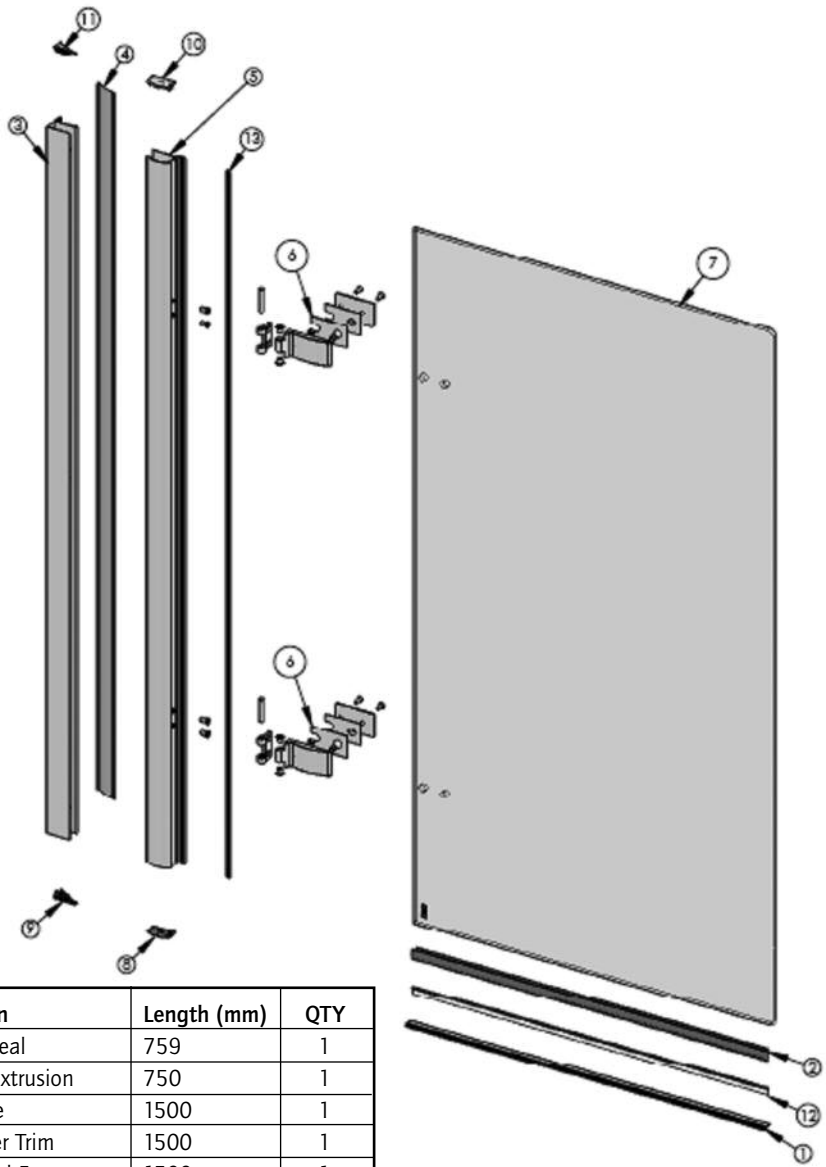


1. Clip on the wall profile cover trim. (It is designed to be a tight fit so take care).
2. Place all the cover caps on the profiles. (R and L on the inside of the caps indicate the handing of the caps looking from the inside of the enclosure).
3. Stick on the Roman Branding Badge.
4. Seal vertically the full length of the wall profiles on the inside and outside of the enclosure where it meets the tiles.
5. Seal horizontally along the bottom of the vertical Profiles on the outside of the Bath screen where it meets the bath and tiles.

- (Please leave the sealant 24 hrs to cure before use).

Spare Parts: If you need to replace any damaged parts please see illustration below for parts list then call Customer Services on 01325 328034.

OBL/OBLC



Silver Frame

Item No.	Part Number	Colour	Description	Length (mm)	QTY
1	RCBLBTSS	Silver	Bath Top Seal	759	1
2	RCBLDS	Silver	Deflector Extrusion	750	1
3	RODWPS	Silver	Wall Profile	1500	1
4	ROD02S	Silver	Screw Cover Trim	1500	1
5	ROBL01S	Silver	OBL Vertical Frame	1500	1
6	RMC0067	Silver	OL Hinge Assembly		2
7*	OBL13/OBLC13	Clear	8mm Toughened Glass		1
8	RIM0134	Grey	Vertical Cover Cap (R-H)		1
9	RIM0142	Grey	Screw Cover Cap (R-H)		1
10	RIM0135	Grey	Vertical Cover Cap (L-H)		1
11	RIM0143	Grey	Screw Cover Cap (L-H)		1
12	RG0051	Clear	Bottom Seal	750	1
13	RG0055	Black	Vertical Door Seal	1500	1

White Frame

Item No.	Part Number	Colour	Description	Length (mm)	QTY
1	RCBLBTSW	White	Bath Top Seal	759	1
2	RCBLDW	White	Deflector Extrusion	750	1
3	RODWPW	White	Wall Profile	1500	1
4	ROD02W	White	Screw Cover Trim	1500	1
5	ROBL01W	White	OBL Vertical Frame	1500	1
6	RMC0071	White	OL Hinge Assembly		2
7*	OBL13/OBLC13	Clear	8mm Toughened Glass		1
8	RIM0136	White	Vertical Cover Cap (R-H)		1
9	RIM0144	White	Screw Cover Cap (R-H)		1
10	RIM0137	White	Vertical Cover Cap (L-H)		1
11	RIM0145	White	Screw Cover Cap (L-H)		1
12	RG0051	Clear	Bottom Seal	750	1
13	RG0056	White	Vertical Door Seal	1500	1

* Important that the correct code is specified i.e OBL13 or OBLC13

TROUBLE SHOOTING GUIDE.

Problem	Solution
LEAKING	<ol style="list-style-type: none"> 1. Check the screen has been sealed correctly as per the instructions: Vertically on the inside and outside of the wall profiles. Horizontally along the aluminium on the outside only. At the bottom of the wall profiles where they meet the wall and the bath. 2. Check the linking strip is installed as per the instructions. 3. Check the bottom seal extrusion has been installed as per the instructions. Make sure the deflector seal is facing the inside of the bath. Make sure the horizontal seal is sealed along the length of the linking strip. 4. Make sure the vertical seal is depressed the full length of the aluminium profiles when shut. 5. Check the screen has been fitted 5mm from the inside of the bath.
SCREEN ALIGNMENT ON BATH	<ol style="list-style-type: none"> 1. Check the wall profiles have been installed as per the instructions: Make sure they are vertically level. 2. Check the bath installation. 3. Check the wall profile has been fitted 5mm from the inside of the bath. 3. Check the walls are vertically level.
SCREEN NOT OPERATING SMOOTHLY	<ol style="list-style-type: none"> 1. Check the bath installation: Check the bath is level. 2. Check the wall profiles have been fitted as per the instructions: Make sure they are vertically level. 3. Make sure the horizontal gap between the glass and the bath is parallel.

Some important information to help you Maintain your Roman product.

The following information is all you need to keep your Roman Product looking new.

Roman Showering Products are designed for luxury showering and with care and attention you can keep them looking new for longer by using the strongly recommended Roman Ultra care. This is a multi-purpose glass protector that is applied after cleaning.

Alternatively you can clean your Roman Product using a mild detergent diluted in water and then polished off using a soft cloth.

If you live in a hard water area, periodically clean your Roman product using a 50/50 solution of white vinegar and water. The solution should be left on the enclosure for approximately 5 minutes then rinsed off using warm water. This method of cleaning should remove lime scale residue.

Simple maintenance.

Roman Products are generally maintenance free, however it may be necessary to lubricate wheel assemblies and other moving parts from time to time. It is strongly recommended that a quality silicone spray is used.

A list of Don'ts:

- 1 - Don't use acidic based products which are unsuitable for cleaning enamel surfaces.
- 2 - Don't use Abrasive cleaners or cleaners containing bleach or solvents, these products will adversely affect the finish of the aluminium profiles.
- 3 - Don't use scouring pads, powder or any sharp instruments when cleaning the enclosure.



ULTRA CARE

THE MORE YOU SPRAY – THE MORE YOU PROTECT.

Roman Ultra Care is a product from Roman designed to give all your shower and bathroom surfaces a long-lasting sparkle. The benefit of Ultra Care is the more you spray, the more you protect.

Ultra Care is a multi-purpose glass protector that repels the build-up of grime, limescale and stains.

Roman Ultra Care was developed for Roman shower enclosures and screens. It is a unique and effective non-filming formula for all glass surfaces, tiles, shower seals and aluminium frames, taps, trays and baths.

Why not try it on your car windscreen!

For your nearest stockist please call +44 (0) 1325 328034

ROMAN LIMITED, WHITWORTH AVENUE, AYCLIFFE INDUSTRIAL PARK, COUNTY DURHAM, DL5 6YN, ENGLAND, UK.

Member of
THE BATHROOM
MANUFACTURERS
ASSOCIATION

GENERAL RECEPTION: PHONE +44 (0) 1325 311318 FAX +44 (0) 1325 319889
 CUSTOMER SERVICES: PHONE +44 (0) 1325 328034 FAX +44 (0) 1325 328031
 SALES ENQUIRIES: PHONE +44 (0) 1325 328033 FAX +44 (0) 1325 328027

www.roman-showers.com